

Female Style R Expanded



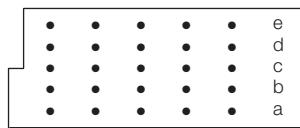
Series 8477 – 5 rows (5 x 32) Inverted



| Contact Design and Termination Length | Number of Contacts | Loading Description | Part Number | |
|--|--------------------|--------------------------------|--|---------------------|
| | | | Performance classes according to DIN 41612 | |
| | | | II | I |
| 0.6 x 0.6 mm Post Profile 3.0 mm (Y) Right Angled | 160 | a + b + c + d + e fully loaded | 20 8477 160 002 025 | 20 8477 160 002 049 |
| 0.6 x 0.6 mm Post Profile 4.5 mm (Y) Right Angled | 160 | a + b + c + d + e fully loaded | 20 8477 160 012 025 | 20 8477 160 012 049 |

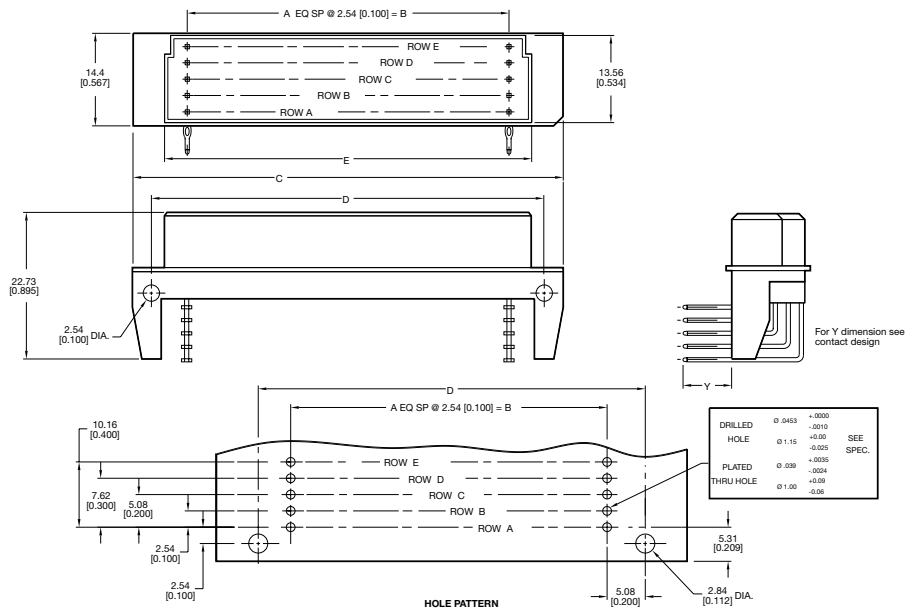
NB: Alternative Prefix Variations Available: 22, 26 & 27, please refer to Page 10.
Additional Plating & Loading Variations: Please contact your local AVX sales office or distributor.

LOADING DESCRIPTION



160 contacts,
rows a + b + c + d + e fully loaded

DIMENSIONS



Unit: millimeters (inches)

| No. Contact Positions | Contact Rows | A | B | C | D | E | F | G |
|-----------------------|--------------|----|------------------|------------------|------------------|------------------|------------------|------------------|
| 160 | 5 (5 x 32) | 31 | 78.74 (3.100) | 93.90 (3.697) | 88.90 (3.500) | 84.90 (3.343) | 11.10 (0.437) | 13.10 (0.516) |